

## Soups

\$2.25

<b>Mondays</b>	Chicken and Wild Rice; Minestrone
<b>Tuesdays</b>	Chicken & Dumplings; Golden Cheese & Broccoli
<b>Wednesdays</b>	Cream of Potato with Bacon; Tomato Basil Bisque
<b>Thursdays</b>	Home Style Chicken Noodle; Vegetarian Garden Vegetable
<b>Fridays</b>	Cream of Broccoli

## Drinks

Fountain Drink.....	\$1.39
Classic Coke, Diet Coke, Sprite, Mello Yello, Pibb Xtra, Cherry Coke, Mountain Blast PowerAde, and Pink Lemonade	
Refill.....	\$0.55
Bottled Soda.....	\$2.19
Milk Pint.....	\$2.15
Soy Milk.....	\$2.69
Bottled Vitamin Water.....	\$2.79
Bottled PowerAde.....	\$1.95
Bottled Water.....	\$1.95
Bottled Juice.....	\$2.25

We also serve several Grab-n-Go items for those in a rush. We have Vegetable and Fruit Cups, Premade Sandwiches and Wraps, Chips, Cereal Cups, Breakfast Bars, and Candy.

## Coffee, Espresso & Tea

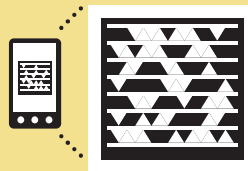
	Small	Medium	Large
Drip Brew Coffee	\$1.50	\$1.95	\$2.25
Café Latté	\$3.49	\$3.99	\$4.49
Cappuccino	\$3.49	\$3.99	\$4.49
Americano	\$3.09	\$3.29	\$3.49
Caramel Apple Spice	\$1.65	\$2.15	\$2.80
Tazo Chai Tea Latté	\$3.09	\$3.29	\$3.49
Café Mocha Latté	\$3.49	\$3.99	\$4.49
Steamer	\$2.49	\$2.79	\$3.19
Macchiato	\$4.49	\$4.99	\$5.99
Hot Chocolate	\$2.65	\$3.15	\$3.35

Tazo Tea Bag.....	\$1.69
Hot Chocolate Packet.....	\$1.50
Lipton Tea Bag.....	\$1.19
Single Espresso Shot.....	\$1.99
Flavor Shot.....	\$0.45

### We Proudly Accept

Visa, MasterCard, Discover,  
I-Bucks and CampusAccess

Crimson Meal Plans for faculty and staff provide a 25% discount on purchases made at any RPS dining location and may be purchased online.



Get the free mobile app at  
<http://gettag.mobi>

# RPS CAMPUS CAFE

AT THE CYBERINFRASTRUCTURE  
BUILDING

### Café Hours:

Monday – Thursday  
7:30 a.m. – 6 p.m.

Fridays  
7:30 a.m. – 1 p.m.

### Kiosk Hours:

Monday – Friday  
7:30 a.m. – 11:00 a.m.

## Breakfast

Made Fresh Daily

<b>Waffle</b> .....	\$2.75
Includes 2 syrup packages	
<b>Waffle with Topping</b> .....	\$3.99
Choice of Chocolate or Caramel Topping	
Includes 2 syrup packages	
<b>Scholars Inn Bagel</b> .....	\$1.35
Plain, Whole Wheat, Blueberry, Cinnamon Raisin, Spinach, Every Seed, Sesame Seed, or Jalapeno & Cheddar	
<b>Bagel with Cream Cheese</b> .....	\$2.00
Cream Cheese options: Plain, Lite, Strawberry, or Garden Vegetable	

## Bakery

Baked Fresh Daily at our On-Campus Bakery

Donut .....	\$0.75
Pastry .....	\$1.35
Fruit Bread Slice .....	\$1.35
Scone .....	\$1.99
Muffin .....	\$1.99
Cookie .....	\$1.09
Rice Krispy Treat .....	\$1.35
Special K Cluster .....	\$1.35
Brownie .....	\$1.35

## Fresh Fruits

Apple, Banana, Orange, Peach Slices, or Pineapple Chunks .....	\$1.09
Cantaloupe, Honeydew, or Strawberries .....	\$3.59
Green or Red Grapes .....	\$2.25

## Deli

Made To Order

<b>Peanut Butter &amp; Jelly</b> .....	\$0.99
Choice of Wheat or White Bread	
<b>Classic Deli Sandwich</b> .....	\$3.09
Choice of Wheat or White Bread	
<b>Sub</b> .....	\$5.75
Choice of Wheat or White Sub	
<b>Wrap</b> .....	\$5.75
Choice of Tomato, Spinach, Spicy Thai, or Honey Wheat	
<b>Bagel Sandwich</b> .....	\$5.75
Choice from our selection of Scholars Inn Bagels	
<b>Grilled Cheese</b> .....	\$1.99
Choice of Wheat or White Bread	

### PROTEIN CHOICES

Chicken Salad, Tuna Salad, Hummus  
Deli Sliced Meats: Turkey, Low Sodium Turkey,  
Chicken, Corned Beef, Ham

### CHEESE CHOICES

Cheddar, Mozzarella, Provolone, Pepper Jack,  
Swiss

### TOPPINGS CHOICES

Lettuce, Tomato, Black Olives, Banana Peppers,  
Green Peppers, Jalapeno Peppers, Red Onions,  
Pickles, Alfalfa Sprouts, Cucumbers

### SAUCE & SPICE CHOICES

Mayonnaise, Yellow Mustard, Honey Mustard,  
Dijon Mustard, Buffalo Sauce, Ranch Dressing,  
Bleu Cheese Dressing, 1000 Island Dressing,  
Caesar Dressing, Olive Oil, Vinegar, Oregano

## Salads

Tossed Salad .....	\$3.89
Chef Salad .....	\$4.99
Caesar Salad .....	\$4.39
Chicken Caesar Salad .....	\$4.99
Spinach Mandarin Orange Salad .....	\$4.39

## Panini Sandwiches

\$5.39

Please Allow 5-7 minutes for Grilling

### French Morning

Deli Sliced Turkey & Ham, Provolone, and *Smucker's*  
Strawberry Preserves on Sourdough Bread

### Traditional Reuben

Deli Sliced Corned Beef, Swiss, Sauerkraut, and  
1000 Island Dressing on Marble Rye Bread

### Ham & 3 Cheese

Deli Sliced Ham, Cheddar, Provolone, Mozzarella,  
and Tomato on Garlic Herb Focaccia Bread

### Turkey & 3 Cheese

Deli Sliced Turkey, Cheddar, Provolone, Mozzarella,  
and Tomato on Garlic Herb Focaccia Bread

### 3 Cheese

Cheddar, Provolone, Mozzarella, and Tomato on  
Garlic Herb Focaccia Bread

### Buffalo Chicken

Deli Sliced Chicken, Mozzarella, Blue Cheese  
Dressing, Hot Sauce, and Ranch Dressing on  
Wheat Bread

### California Chicken

Deli Sliced Chicken, Swiss, Tomato, and Caesar  
Dressing on Sourdough Bread

### Chicken Caesar

Deli Sliced Chicken, Mozzarella, Tomato, and  
Caesar Dressing on Sourdough Bread

### Triple Club

Deli Sliced Turkey & Ham, Bacon, Cheddar, Tomato,  
and Mayonnaise on Wheat Bread

### Ham & Cheddar

Ham, Cheddar, Tomato, Red Onions, and  
Honey Dijon Mustard on Sourdough Bread

### Tuna Melt

Tuna Salad, Swiss, and Tomato on Marble Rye Bread

### Vegetarian

Provolone, Tomato, Red Onions, Alfalfa Sprouts,  
and Guacamole on Sourdough Bread

*No ingredient substitutions are allowed  
on Panini Sandwiches*